



ELEGANT
LIVING
PROJECTS

House & Land Package

RILEY 31

Lot 220 & 219 (448m²)

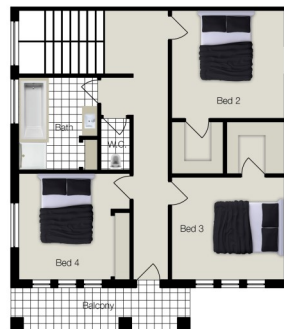
Land Size: 14 x 32

Opalia Estate

\$611,636



Category 3 Upgrade Façade Shown



Package Inclusions

- ✓ The Riley Design
- ✓ 31.59 Square Home (Incl. Dwelling, Garage, Alfresco, Balcony & Porch)
- ✓ Living Range Inclusions
- ✓ P Class Slab Allowance
- ✓ Remote Panel Lift Garage Door
- ✓ Colour Through Front Driveway
- ✓ Stainless Steel Dishwasher
- ✓ 450mm Eaves to Front Façade (as per developer guidelines)
- ✓ Builders Range Carpet & Tiles
- ✓ NBN hook-up & 2 Data Points to Homes
- ✓ More Options Available.
- ✓ We also custom design.

1300 003 235 | New Display home COMING SOON!! | Please contact for an appointment

www.elegantprojects.com.au | david@elegantprojects.com.au | facebook.com/elegantprojects | instagram.com/elegantprojects

Images are for illustrative purposes only and may not represent, but not limited to, the final product, façade, driveway, landscaping and all inclusions. Prices are based on the availability of land. The builder reserves the right to amend the specifications and price without written notification. Developer guidelines may affect the final price, inclusions and façade design. Home and land packages cost subject to soil test report, engineering report, developer approval, BAL and 6 star report AND is not available in conjunction with other promotions—this is not a fixed price contract. Prices and information in this document is correct as at 23/5/2019 to 01/06/2019 (subject to change without notice) FHOG applies to eligible buyers only visit www.sro.vic.gov.au for more information. This plan is copyright protected—it is advertised on the condition that except with our written permission it must not be reproduced, copied, altered or communicated to any other party nor be used for any purpose other than stated in the particular enquiry, order or contract with which it was issued.