

**easy**  
LIVING

*Life's better*

WITH VICTORIA'S NO.1 HOME BUILDER



fixed price  
**\$494,600\***

first home owners \$484,600^

Images for illustrative purposes only & may depict upgrade options available at additional charges such as lighting, window furnishings, timber look garage door & timber windows. Pricing also excludes features not supplied by Carlisle, inc fencing, landscaping, letterbox, decking & driveway. Facade details inc entry door, window sizes & placements may vary between house types & sizes. Refer to working drawings for specific locations and sizes.

why  
rent?

first home owners  
buy from  
**\$341** PER WEEK\*

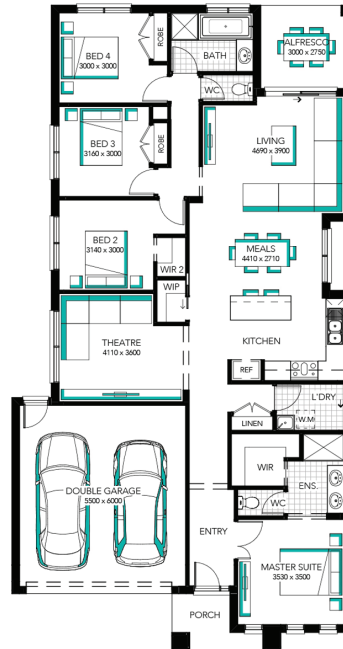
## Springwood 23

Lot 340 (400m<sup>2</sup>) Opalia, WEIR VIEWS



### EasyLiving THE BIG DEAL Inclusions\*\*:

- ✓ FIXED PRICE SITE COSTS AND CONNECTIONS
- ✓ DEVELOPER AND COUNCIL REQUIREMENTS
- ✓ CLASSIC RANGE SLIM PROFILE ROOF TILES
- ✓ OR COLORCOTE METAL ROOF TO SINGLE STOREY HOMES
- ✓ ZONED SECURITY ALARM SYSTEM
- ✓ WHITE LED DOWNLIGHTS TO ENTRY AND LIVING AREAS
- ✓ ADDITIONAL DOUBLE POWER POINTS TO THE HOME
- ✓ ADDITIONAL TELEVISION POINT/S
- ✓ 20MM CAESARSTONE BENCHTOP WITH 16MM SHADOWLINE TO KITCHEN AND ENSUITE
- ✓ LAMINATE LAUNDRY CABINETRY WITH STAINLESS STEEL TROUGH
- ✓ TOILET ROLL HOLDERS TO ENSUITE, WC AND POWDER ROOM
- ✓ TOWEL RAIL OR RING TO ENSUITE AND BATHROOM
- ✓ GARAGE DOOR ACCESS
- ✓ 6 STAR ENERGY RATING



**CARLISLE**  
HOMES

### FOR ENQUIRIES CONTACT:

Kosta Aveyrinos m: 0423 457 989 | w: [easylivingbycarlisle.com.au](http://easylivingbycarlisle.com.au)  
Or visit: Thornhill Park, 11 - 13 Lincolnshire Drive, THORNHILL PARK VIC 3335  
Open 5 days a week; Mon - Wed: 12pm - 5pm Thu - Fri: By appointment Week-ends: 11am - 5pm

*Opalia*

\*Fixed Price current as of 23/05/2019. Hebel homes may be smaller than dimensions shown on the floorplan due to the external wall thickness; see working drawings for Hebel home dimensions. Confirm land prices and availability prior to purchase. Subject to developer and council approval. Price does not include any stamp duty, government, legal or bank charges. Alterations may incur additional charges. Carlisle reserves the right to withdraw or amend pricing, inclusions and promo without notice. ^Total package price minus \$10K FHOG or \$20K FHOG for regional estates (subject to SRO eligibility). #Repayment calculated on total package price, less 20% deposit inclusive of the \$10K First Home Owner's Grant or \$20K First Home Owner's Grant for regional estates (subject to SRO eligibility), less fees, not inclusive of lender's mortgage insurance, with a variable interest rate of 4.59% p.a., comparison rate of 4.61% p.a., and 5 years of Interest-Only repayments. \*\*The 'Big Deal' offer applies to new quotes and initial deposits received from 5 Jan 19 on all EasyLiving Series Homes and is available in conjunction with the EasyLiving Home Designs and Reference Guide September 2018 addition. For a detailed list of the Big Deal inclusions and for further details, see your Sales Consultant and visit [carlislehomes.com.au/disclaimer](http://carlislehomes.com.au/disclaimer). ^^The '5% Builders Deposit' promotion applies to new quotes and initial deposits on EasyLiving Series homes excluding the Cariya 16 & Chadwick 24 from 13 February 2019. The customer must pay their initial \$2K deposit and sign a Building Contract for the full Contract Tender within 4 weeks of the deposit. At the time of Contract signing, a variation is raised to credit the balance of the 5% deposit. Please speak to a Sales Consultant for further details and visit [carlislehomes.com.au/disclaimer](http://carlislehomes.com.au/disclaimer). ##See a Sales Consultant for further details. © 2019 Carlisle Homes Pty Ltd. Registered Building Practitioner CDB-U50143 ©2019 Carlisle Homes Pty Ltd.