



HOUSE & LAND

\$538,200*

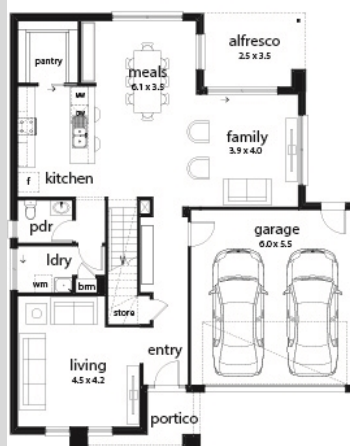
OPALIA ESTATE – MELTON SOUTH

Lot 312 Elpis Road
Melton South VIC 3338

Sapphire 29 Livia Facade
(Aspirations)

Home size: 29.23sq Land size: 350m²

- ✓ Aspirations Inclusions
- ✓ BAL
- ✓ Site Costs Allowance
- ✓ Developer/Estate Covenant Requirements
- ✓ Recycled Water
- ✓ NBN Connection
- ✓ 2580mm Ceiling Height
- ✓ Double Garage
- ✓ Sectional Garage Door
- ✓ Remote control to garage door
- ✓ Flyscreens
- ✓ Stainless Steel Appliances
- ✓ 900mm Appliances
- ✓ Ducted Heating
- ✓ Floor Coverings
- ✓ 35 m² of Concrete Drive and Paving
- ✓ Current Promotion



Opalia

Go to dennisfamily.com.au or call
1800 DENNIS for more information.

Gagan Singh 0408307514
Reference HL0030762