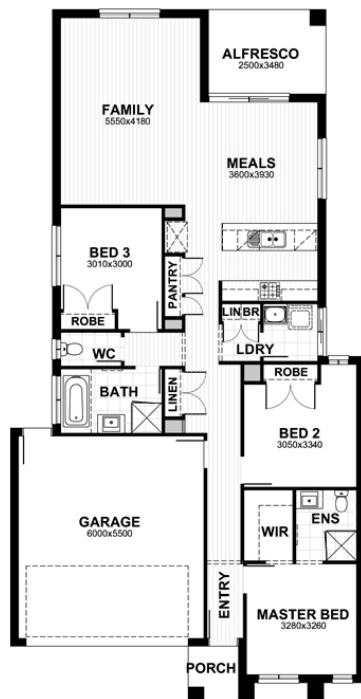




HOUSE & LAND PACKAGE  
**\$400,290\***

LOT 205 Midgard Rd \*Incl FHOG!, Melton

3 2 1 2



## NOOSA 19

LOT SIZE 294 sqm

HOUSE AREA 178.96 sqm

*Opalia*

### Inclusions

- Fixed Price Site Costs & Connections
- Developer & Council Requirements
- Exposed Concrete Driveway Up To 36m<sup>2</sup>
- Timber Flooring to Entry/Kitchen/Meals/Dining (House Specific)
- Carpet to Bedrooms and Rear Passage (House Specific)
- Tiles to Wet Areas (Laundry, W.C, Bathroom, Ensuite & Powder Room)
- Remote Control to Garage Door
- Landscaping to front only inc Letterbox
- Internal LED Down Lights Throughout
- Kitchen Overhead Cupboards (House Specific)
- Dishwasher
- 2590mm High Ceiling to Sgl Storey & Grnd Flr of Dbl Storey
- Evap Cooling, 7 Points to Sgl Storey/Upper Floor of Dbl Storey
- 20mm Stone Benches to Kitchen, Bathroom & Ensuite
- 900mm Appliances including Freestanding Oven and Rangehood

For more information contact  
 Nish on 0404 292 898

Fixed Price current as at 21/05/2019. Hebel homes may be smaller than dimensions shown on the floorplan due the external wall thickness; see working drawings for Hebel home dimensions. Package price excludes external lighting, telephone service, customer account opening fees, stamp duty on land, legal fees and conveyancing costs including titles and property report. ^Carpet and timber laminate flooring from Sherridon Homes Category 1 selection. Sherridon Homes reserves the right to alter the images or descriptions without notice. All home and land packages cannot be used in conjunction with any other Sherridon offers or discounts. All home & land packages are subject to developer and council approval. Land prices and availability are subject to change without notice. ©2019 Sherridon Homes Pty Ltd. Region: Greenfields

Call **1300 188 668** or visit [www.sherridonhomes.com.au](http://www.sherridonhomes.com.au)

Sherridon Ply Ltd | 56 Barclay Road, Derrimut, Victoria 3026 | VIC Builder's Licence: CDB-U 50039 | P +61 3 8390 5000 |

E [info@sherridonhomes.com.au](mailto:info@sherridonhomes.com.au)