

Price includes standard floorplan with S1 facade.

First Home Buyers Price **\$439,900[†]**



Furniture, feature lighting, landscaping, driveway, window furnishings, and porch decking not provided by Lifestyle Range - Eight Homes.

FIXED PRICE HOUSE & LAND

S.FOUR.1 4-23

Lot 312 Elpis Road, Weir Views (Opalia Estate) VIC

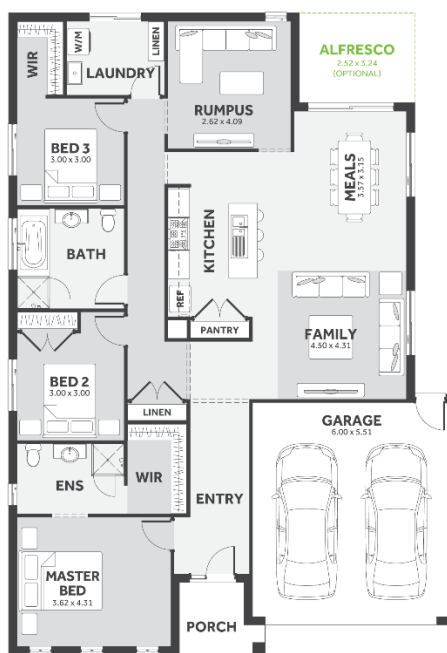
LAND SIZE: 350m² 14m x 25m

Opalia

4 bedrooms, 2 bathrooms, 2 cars

209.14 m² | 22.51 sqs

- ✓ Fixed Site Costs inc Rock Removal
- ✓ Council and Developer Requirements
- ✓ 12 Month Price Freeze
- ✓ 25 Year Structural Guarantee
- ✓ \$888 Deposit
- ✓ Efficient and Simple



Please Contact

Robert Gennari
0499 860 539
robertg@8homes.com.au

We make it easy!

*Package price is based on builder's preferred siting. Eight Homes reserves the right to change prices/promotions without notification. Subject to developer's design review panel final approval. Images are for illustrative purposes & are to be used as a guide only. Please refer to house specific inclusions and working drawings for all details
[†] \$10,000 First Home Owner Grant - visit www.sro.vic.gov.au to see if you are eligible, Registered building practitioner DBU 18864.