

## HOUSE & LAND PACKAGE

- Stylish, practical floorplans
- Amazing on-trend inclusions beyond the essentials

*Opalia*



Riverview 266

4 2 2 14.0m



Lot: 146 Midgard Road, Melton South

Estate: Opalia

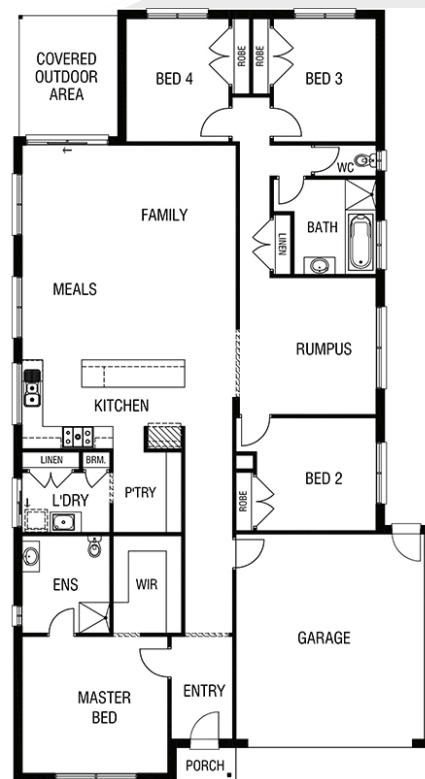
Block size: 448m<sup>2</sup>

Title Exp: April 2020

House Size: 26.67sq

### Package Includes:

- Up to \$40,000 of upgrades (House specific)
- Developers Guidelines
- Fixed Site Costs
- Colorbond® roof
- 900mm Stainless Steel Upright Cooker
- 900mm Stainless Steel Canopy Rangehood
- Overhead Cabinets to the Kitchen
- Soft Close hinged doors and drawers
- Ducted Heating
- 6-star energy rating on BEST orientation



[www.fairhavenhomes.com.au](http://www.fairhavenhomes.com.au)

**Brent Alford**  
t: 0402507332  
e: balford@fairhavenhomes.com.au

**Internal**  
12 Wheeler Street  
BERWICK, VIC 3806