

## HOUSE & LAND PACKAGE

- Stylish, practical floorplans
- Amazing on-trend inclusions beyond the essentials

*Opalia*



**Neo 195**

4  2  2  12.5m



Lot: 327 Leo Road, Melton South

Estate: Opalia

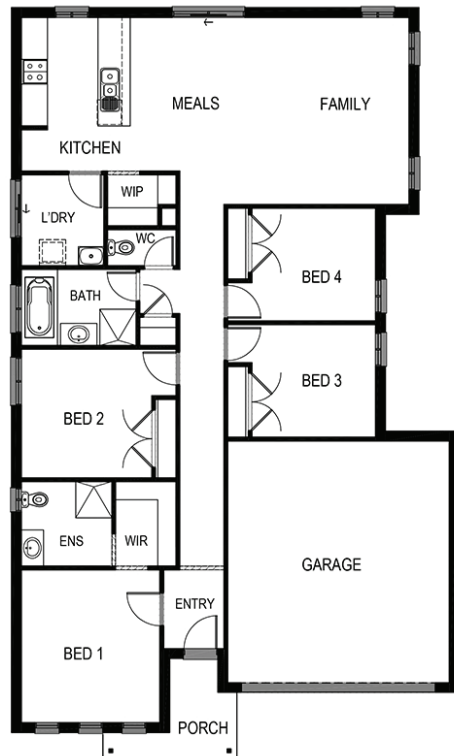
Block size: 356m<sup>2</sup>

Title Exp: June 2020

House Size: 19.53sq

**Package Includes:**

- Carpet and Floor tiles throughout
- Colorbond® roof
- Ceramic Cooktop and built in oven
- Reverse cycle split system
- Choice of 5 internal and 5 external colour schemes
- BAL 12.5 included
- Fixed Site Costs
- Developers Guidelines
- 6-star energy rating on BEST orientation
- Smart design to suit compact block sizes



[www.fairhavenhomes.com.au](http://www.fairhavenhomes.com.au)

**Brent Alford**  
t: 0402507332  
e: balford@fairhavenhomes.com.au

**Internal**  
12 Wheeler Street  
BERWICK, VIC 3806