



Price excludes: Fencing, Landscaping, Concrete pavers, Planter boxes, Decking

FIXED PRICE

## \$404,785\*

LOT 414 ALTIS ROAD  
OPALIA ESTATE  
MELTON SOUTH

NOVUS 17  
CHATEAU FACADE

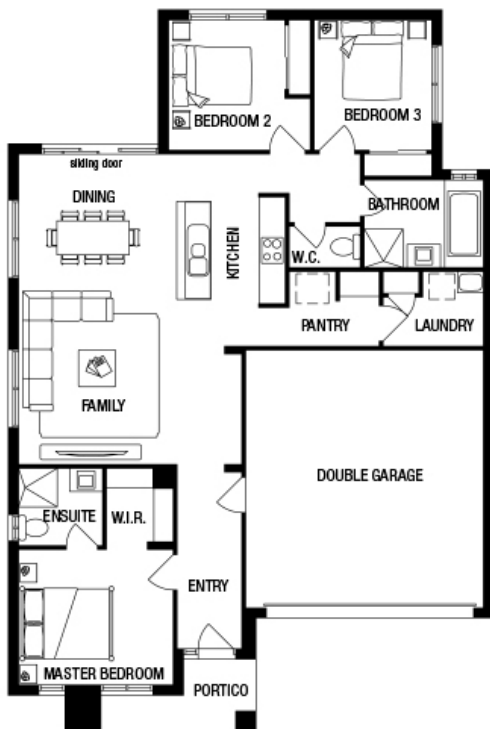
BLOCK SIZE | 263M<sup>2</sup>



### FIXED PRICE PACKAGE INCLUDES:

THE NOVUS 17 WITH CHATEAU FACADE BUILT TO OUR INDUSTRY LEADING BASE SPECIFICATIONS AND LAND, PLUS:

- ✓ Fixed Site Costs  
No more to pay no hidden extras
- ✓ All your flooring covered throughout the entire home:  
Stylish timber laminate floors<sup>^</sup> to Entry, Kitchen, Meals and Family; Luxury carpet † to your bedrooms and balance of home (excluding wet areas); Quality tiles to bathrooms, ensuite and laundry
- ✓ Coloured concrete driveway
- ✓ Remote control garage
- ✓ Developer guidelines & requirements all taken care of
- ✓ Bushfire Attack Level fire rated home BAL 12.5 certified (where required)
- ✓ Lifetime structural guarantee#



## Easy & Affordable.

1300 METRICON  
www.metricon.com.au

BUILD WITH CONFIDENCE

LIFETIME  
STRUCTURAL GUARANTEE

homesolution | metricon

\*Packages correct at time of printing and subject to change without notice. <sup>^</sup>Package includes timber laminate, two strip floating floor. † Luxury carpet is 100% Nylon plush pile carpet. Package price excludes external lighting, telephone service, customer account opening fees, stamp duty on land, legal fees and conveyancing costs including titles and property report. Home Solution reserves the right to alter the images or descriptions in this flyer without notice. See your HomeSolution consultant for full details of standard inclusions. Land supplied by developer. Land prices and availability are subject to change without notice. All home & land packages are subject to developer approval. Newfield Real Estate Pty Ltd ACN 159 312 722, Licence number 028051L. VIC Builder's Licence: CDB-U 52967 #For details on our Lifetime structural guarantee visit metricon.com.au/terms/structuralguarantee. Package Printed Date: 06/12/2019 Price Region: Greenfields