



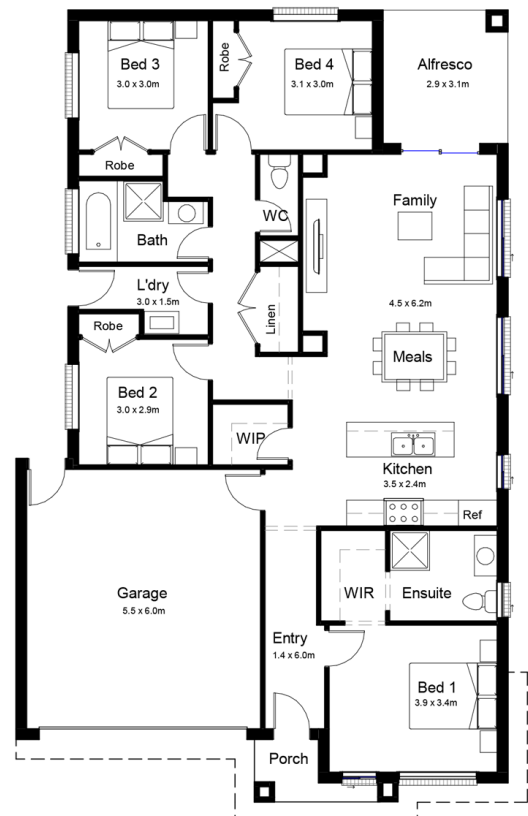
## OPALIA ESTATE WEIR VIEWS

**LOT DETAILS:** 442 Elpis Rd  
**LOT SIZE:** 312m<sup>2</sup>  
**HOME SIZE:** 20m<sup>2</sup>

- Fixed Site cost for H2 slab up to 500mm fall
- Coloured concrete driveway, porch & path.
- Complete landscaping, front, sides & rear.
- Ducted heating & split system cooling
- Flooring to the whole home
- 20mm stone bench to the entire home
- LED down lights throughout the whole home
- 2590 high ceilings to whole home
- Stainless steel appliances including dishwasher
- Block-out blinds to entire home
- Letterbox & clothesline
- Flyscreen's to openable windows
- Brick infill's above windows
- Developer guidelines & council requirements

## Milan 20 - URBAN FACADE

# \$446,400



**JASON TAVERNA**  
 0417 994 989

[jason@newbuildco.com.au](mailto:jason@newbuildco.com.au)  
[www.newbuildco.com.au](http://www.newbuildco.com.au)