

# CORELLA 22

# \$506,500

## Fixed Price Turnkey House & Land Packages



## Stage 05 Lot 553 Skypac Road

- Fixed Price Turnkey House Package
- Fixed site costs & connections (as per standard inclusions)
- Flexible floor plans with a range of facade options
- 2590 Ceilings
- Brick infill's above windows
- Coloured concrete driveway, porch, landscaping & 900mm concrete path around house (as per standard inclusions)
- Letterbox & clothesline
- Remote control panel lift garage door
- Half share fencing
- LED downlights throughout the entire home
- Stone bench top to Kitchen, Ensuite & Bathroom
- 900mm upright oven and cook top with canopy rangehood
- Ducted heating & split system cooling
- Water point for refrigerator
- Stainless steel Dishwasher
- Overhead cupboards in kitchen
- Niches to Ensuite & Bathroom shower
- Quality floor covering throughout
- Flyscreens & window locks to all openable windows
- Block-out roller blinds
- Designer tap ware & basins
- Six star energy with solar hot water & so much more!



email: [info@dbnhomes.com.au](mailto:info@dbnhomes.com.au)

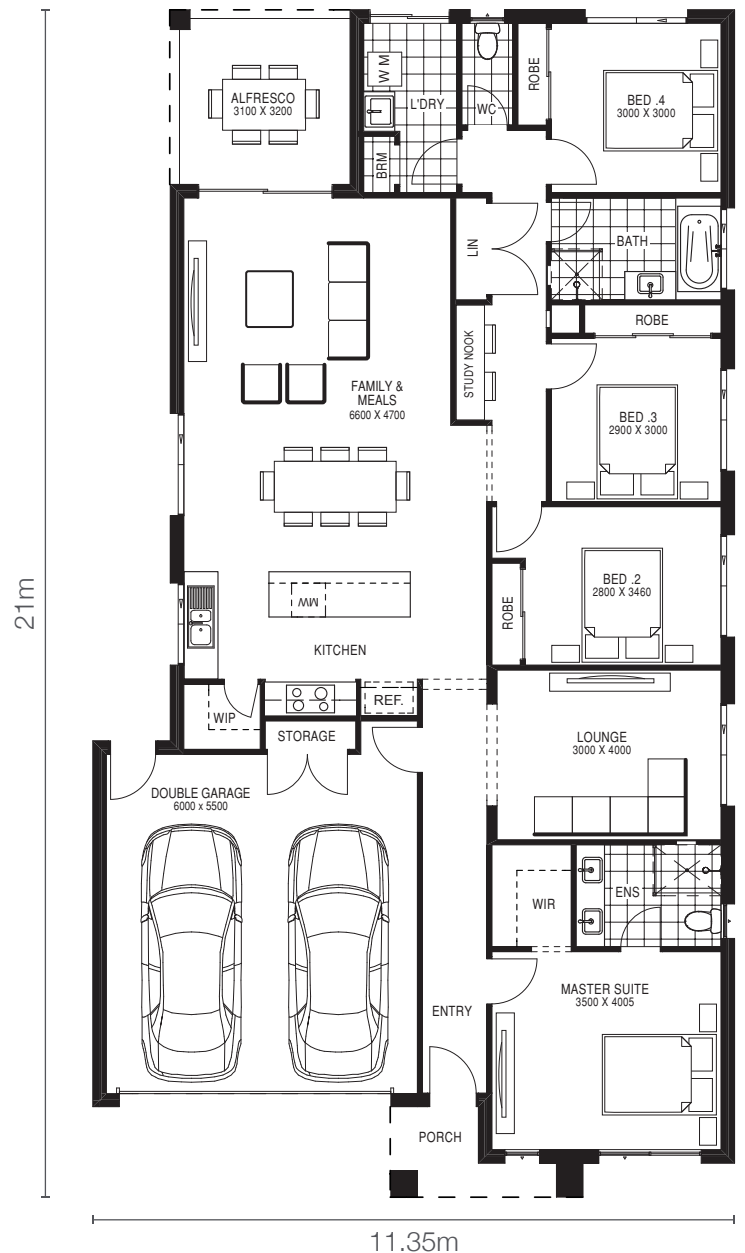
m: 0411 599 382

### HOUSE DIMENSIONS

RESIDENCE	17.14 sq	159.44 m/2
PORCH	0.39 sq	3.59 m/2
ALFRESCO	1.05 sq	9.83 m/2
GARAGE	4.06 sq	37.74 m/2
<b>TOTAL AREA</b>	<b>22.64 sq</b>	<b>210.06 m/2</b>

### LAND DIMENSIONS

LOT SIZE	<b>400 m<sup>2</sup></b>
FRONTAGE	12.50m
DEPTH	32m



21m

11.35m

Size may vary dependant on facade. Refer to working drawings for complete dimensions.

